

# Seniori



<b>Oil Pattern Distance:</b>	<b>38 Feet</b>	<b>Reverse Brush Drop:</b>	<b>38 Feet</b>	<b>Oil Per Board:</b>	<b>50 uL</b>
<b>Forward Oil Total:</b>	<b>7.25 mL</b>	<b>Reverse Oil Total:</b>	<b>11.45 mL</b>	<b>Volume Oil Total:</b>	<b>18.7 mL</b>
<b>Forward Boards Crossed:</b>	<b>145 Boards</b>	<b>Reverse Boards Crossed:</b>	<b>229 Boards</b>	<b>Total Boards Crossed:</b>	<b>374 Boards</b>

	Start	Stop	Loads	Speed	Crossed	Start	End	Feet	T.Oil
1	2L	2R	1	14	37	0.0	0.0	0.0	1850
2	10L	10R	3	18	63	0.0	7.6	7.6	3150
3	13L	13R	3	18	45	7.6	15.2	7.6	2250
4	2L	2R	0	18	0	15.2	24.0	8.8	0
5	2L	2R	0	22	0	24.0	33.0	9.0	0
6	2L	2R	0	30	0	33.0	38.0	5.0	0

Conditioner:  
Type In or Select One

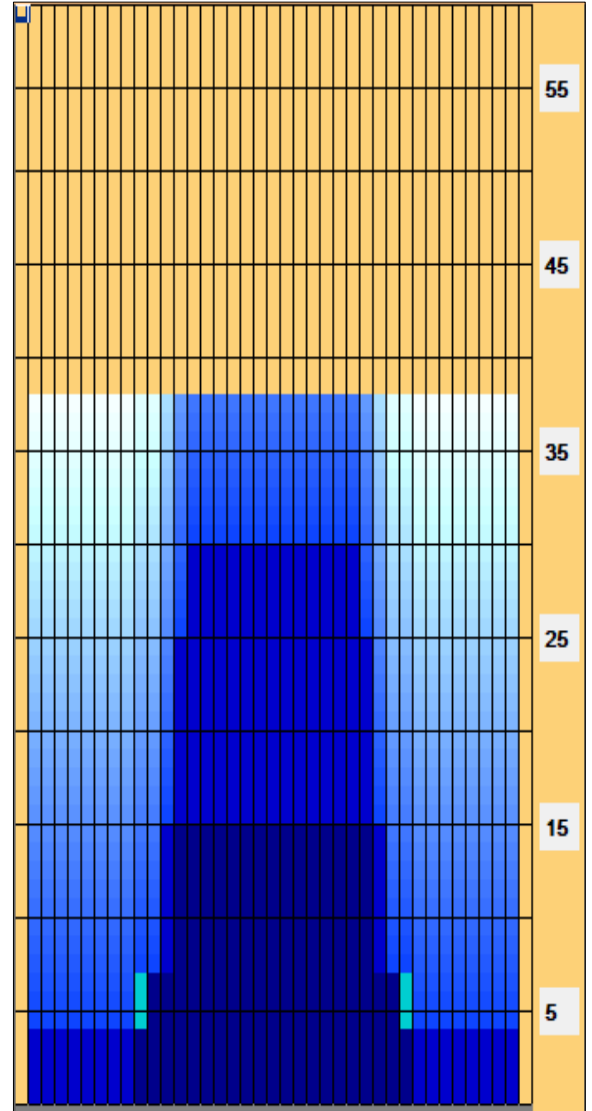
TransferType:  
Type In or Select One

Forward Reverse More

	Start	Stop	Loads	Speed	Crossed	Start	End	Feet	T.Oil
1	2L	2R	0	30	0	38.0	30.0	-8.0	0
2	14L	14R	2	18	26	30.0	24.9	-5.1	1300
3	13L	13R	4	18	60	24.9	14.7	-10.2	3000
4	12L	12R	4	14	68	14.7	6.8	-7.9	3400
5	11L	11R	2	10	38	6.8	4.0	-2.8	1900
6	2L	2R	1	10	37	4.0	2.6	-1.4	1850
7	2L	2R	0	10	0	2.6	0.0	-2.6	0

Forward Reverse More

- Forward
- Reverse
- Combined
- Buff



Item	3L-7L:18L-18R	8L-12L:18L-18R	13L-17L:18L-18R	18L-18R:17R-13R	18L-18R:12R-8R	18L-18R:7R-3R
Description	Outside Track:Middle	Middle Track:Middle	Inside Track:Middle	Middle: Inside Track	Middle:Middle Track	Middle:Outside Track
Track Zone Ratio	10	3.7	1.02	1.02	3.7	10

